

**We express sympathy and God's love to:** Gene and Janice Hartwig on the death of Gene's mother, Gertrude; to Darlene Bartelt, family and friends, on the death of Pastor Merlin Bartelt, husband, father, friend and dedicated pastor to all; to Irma and Lynn Halstead on the death of Rosalie Sorenson, sister and aunt; and to Stephanie and Steve Heseltine on the death of Steph's grandmother, Edith Sogard.

**The Radio Broadcast** is in memory of Margaret Pikop given by Sharon Range and family.

**Baptism:** Kaily Jo Allen, daughter of Patrick Allen and Rebecca Franks, is brought to the Lord in Holy Baptism during the 11:00 worship service this weekend. Kaily's sponsors are Shell Tumberg and Michael Allen

**HELP! We have received a plea from Lutheran World Relief to bring our health kits now instead of waiting for the spring ingathering since we are "within driving distance of the Minneapolis warehouse".** Haiti, Chile, and now Turkey have emptied the warehouse. **Items urgently needed are: hand towels, wash cloths, soap in its original wrapping, adult sized toothbrushes in original wrapping, wide toothed combs, nail clippers, and band-aids. Items can be dropped off at church as soon as possible. Thank you for your generosity!**

**MANY volunteers are needed for the Easter morning worship services on April 4<sup>th</sup>.** A sign up sheet is available at the Welcome Center. Please sign up as soon as possible if you can usher, greet, serve communion, read scripture, drive the mini bus, provide childcare in the nursery, or help at the Welcome Center. Thank you!

Order forms for Honorariums or Memorials for the **Easter Garden** can be picked up at the Welcome Center or in the office. Orders must be received by Wednesday, March 31<sup>st</sup> to be published in the Easter bulletin. All plants are \$15.00.

**MARCH is First Lutherans designated month to help support the Douglas County Food Shelf.**

The Douglas County Food Shelf was begun in 1982 as an outreach mission project of the Emmanuel Episcopal Church in Alexandria. It began in the basement of the church and later was moved to the upstairs level, but when the ceiling below started to sag it was decided something else had to be done. So, in the mid 80's the first building was constructed on its present location on land that had been donated to the Episcopal Church by the Knute Nelson Estate. The work was done by Alexandria Technical College students, greatly reducing the cost. Several years later a second addition was added as increased space became necessary. In 2002 a third addition was added, again with thanks to Alex Tech for their construction help. This was a major addition as it included plumbing for water and a restroom. Wally Bloom of Alexandria served as director from the beginning until June of 2005, when he retired after 23 years. Wally did an excellent job of overseeing the operation and encouraging contributions.

**SERVICE OPPORTUNITY  
VOLUNTEERS NEEDED FOR HABITAT FOR HUMANITY**

The local chapter of Habitat for Humanity is looking for people from First Lutheran Church who are interested in helping build HFH homes in the Alexandria area. Construction on 3 homes will begin in May.

If you would like to be involved please fill out a volunteer sign-up form at the Welcome Center.

If you have any questions please contact Todd Olson, 762-1407 or Mitch Odland, 219-7318.

Join us for **Lent Worship** each Wednesday at 12:10 and 6:30 PM, our theme: Facing Our Fears. **March 17: "What about the Good Old Days?"** Fear of change, the unknown future

**Lent Suppers served** each Wednesday from 4:45-6:10 PM in the Fellowship Hall. A free will offering is appreciated. **Baked Potatoes w/ a variety of toppings** is on the menu for March 17<sup>th</sup>. **NEW DURING SUPPER: "Fear Factor" Games at 5:30 PM:** Three teams of 2 volunteers will play "Let's Make a Deal" as we face our fear of change. Join us on Wednesday the 3<sup>rd</sup> in the Fellowship Hall.

In an effort to reduce congestion around the coffee, we've moved the cookies, donuts and lemonade to inside the Family Room. Coffee will still be outside the Family Room. A trash and cup rack will be near both Family Room doorways as you exit. If you have any thoughts on how this move is working please share them with any of the custodians, Tim, Bob, or Dianna. Thanks!

**THANK YOU** to the knitters and crocheters who responded to our need for baby sweaters. We've gotten 10 very adorable sweaters! Thank you so much for helping support the baptism ministry.

**We realize so many of you volunteer in a variety of ways at the church and in the community so we are not trying to single out one person; but, if you have an opportunity to read the February 2010 edition of "The Connections" a publication of Knute Nelson, it features an great article on Jim Bjerknes. We here at First could easily ditto the article for his faithful service at church. Thanks Jim!**



**BUCKET MINISTRY:** Each month we will support a different local nonprofit agency through prayer, promoting community awareness, and giving parishioners an opportunity to donate items to the agency. In **March** we will be supporting "**LifeRight OUTREACH.**" LifeRight serves the needs of those who are committed to making a possible life change, teaching them "to do the next right thing" using Christ centered principles. For more information on this agency go to

<http://liferightoutreach.org>

***The following items are needed and may be new or gently used, in good condition...*** Bibles, toothpaste, toothbrushes, laundry soap, paper towels, garbage bags, dish soap, bowl cleaner, shampoo, body wash, deodorant, socks, white t-shirts, bedding for twin/single, and tools for on the job—hammers, screwdrivers, pliers, tool belts, etc. Simply drop your donations off in (or next to) the "bucket" located in the West narthex near the women's restroom at church. Additional information about the agency can be found in the gold envelope above the bucket. Thank you for your support!

**LAST CHANCE... a few spaces remain...ENCOUNTERING DIVERSE FAITH COMMUNITIES BUS TOUR...**

You won't want to miss this bus tour. This coming **Tuesday, March 16<sup>th</sup>** our group will immerse ourselves into three distinct faith communities. Our first stop will be the **Hindu Temple** of Minnesota in Maple Grove. It is the largest Hindu Temple in the state, and one of the largest in the whole country. Next we will go to **Beth El Synagogue** where we will have a tour and also enjoy a delicious **Kiddush Luncheon** that will be catered especially for our group. Our last stop will be the **Basilica of St. Mary** in Minneapolis, where we will have a tour and enjoy a brief organ recital.

The cost for the tour, lunch, and a coffee break is \$50.00. You can sign up at the Welcome Center or the church office. We ask that you pay for the trip when you sign up. The trip will depart at 7 AM from the church parking lot, please arrive prior to 7:00 and park in the north parking lot lanes. We should return about 5 PM. We hope you and your friends can join us on this educational and interesting trip!

**Focus Book Club meets March 16 at 6:30 PM.** We will be discussing "When Morning Comes" by Cindy Woodsmall. All adults welcome to participate, we meet in the church Family Room:

**Bridge:** The next bridge date will be March 22 at 1:00 PM. If interested in playing please call Linda Meyer @ 763-3130 prior to the dates.

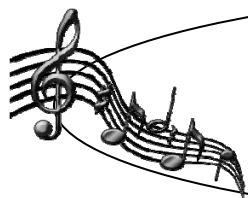
**Faithfully Fit Forever Spring session begins on March 23** at 10:30 AM and runs thru May 11. All adults are welcome to this time of warm-up exercises, light aerobics,, cool down, weight training, and devotions. Persons of all fitness levels are welcome. These classes are led by our parish nurses, Arlyn and Val.

**FREE Grief Seminar:** sponsored by Anderson Funeral Home at First Lutheran on Tuesday afternoons **March 23- April 27, 2010, 12:30-2:00 PM in the Family Room.** Please pre-register by calling AFH @ 763-5900.

On April 22, the First Lutheran Adult Ministry Board is offering another unique BUS TRIP. It starts at **St. John's University** for a tour and chance to see and learn about the amazing **St. John's Bible Project**, the world's newest illustrated, handwritten Bible. Then we're off to the **Minnesota Science Museum** to see the world's oldest written record of scripture, the **Dead Sea Scrolls Exhibit**. This is an amazing opportunity and will be an inspiring, learning experience. The cost is \$50.00 pp and includes lunch and a coffee break. More details will be coming in April, but a sign up sheet is already available at the Welcome Center. Please pay when you sign up.

### AREA EVENTS:

**Care Packages for Our Troops...** Blue Star Mothers welcomes donations that they will ship to our troops for Easter. The following **donations are suggested:** Easter Cards and Letters, money for postage, wet wipes (travel size) hand sanitizer, powdered drink mix packets (kool-aid, tea, crystal light, Gatorade) dry foods (jerky, granola bars, energy bars, slim jims, dried fruit, nuts, trail mix, M & M's, gum, cheese and cracker packs), travel size personal hygiene items (toothbrush and soap cases, toothbrushes, chap stick, eye drops, foot powder, lotion, shampoo, q-tips, Kleenex, cotton balls, toothpaste, floss, liquid and bar soap) sunblock (especially lip protection), CD's and DVD's, pudding packs, fruit packs, microwave popcorn. Donations can be dropped off at the National Guard Armory on 3<sup>rd</sup> Avenue and Broadway between 8 AM and 4 PM Monday thru Friday. The donation **DEADLINE** is: Wednesday, March 17. **If you know someone in the military overseas that would appreciate receiving a letter or package send their address to: BLUE STAR MOTHERS, PO BOX 1205, ALEXANDRIA, MN 56308**



**"You're a Good Man, Charlie Brown" Musical**  
**Saturday, March 20, 2010 at 2:00 p.m.**  
**Calvary Lutheran Church, 605 Douglas St. Alexandria**  
**FREE admission.**  
**There are youth participating from five Robbinsdale**  
**area Lutheran churches.**

**Come experience the Passion Drama: Sunday, March 28<sup>th</sup> 2:00-5:00, Tuesday, March 30<sup>th</sup> 5:30-8:00 PM.** You are invited to come experience Jesus' last days on earth. As part of a free 15 minute outdoor guided tour, you will view 12 different scenes from the birth of Jesus to the Ascension. Come experience the pain, love and sorrow He endured for each and every one of us. Please note the scenes are biblically accurate and graphically portrayed and may not be suitable for small children. Guided wheelchairs and golf carts will be provided for the physically challenged. The Passion Drama is presented by Zion Lutheran Church and Good Shepherd Lutheran Church at 300 Lake Street, Alexandria, MN, (just across from Thrifty White Drug Store). For more information call 320-763-4842 or go to: [www.passiondrama.com](http://www.passiondrama.com)

**LUTHER CREST**, for more info on any events at LC contact them at the following:

8231 Co. Road 11 NE, Alexandria, MN 56308 [www.luthercrest.org](http://www.luthercrest.org) [lcbc@luthercrest.org](mailto:lcbc@luthercrest.org) 320-846-2431.

**BEGINNING EXPERIENCE, April 9-11, 2010:** BEGINNING EXPERIENCE is a program designed to facilitate the grief resolution process for adults who have suffered a loss through death, divorce, or separation, thereby enabling them to again love themselves, others, and God. We accomplish this by offering quality grief resolution programs presented by trained peer ministers. These programs are designed to move grieving people through a transformational process to a new beginning in their lives. Those who attend the weekend should be beyond the initial feelings of anger and despair. To receive an application or for more information, call 1-888-565-0178 or visit <http://www.beginningexperiencecentralmn.org>

**(3-5 grade) TAKE'N'EAT RETREAT, April 9-10, 2010.** Holy Communion! Experience a Seder Meal and stay overnight with counselors into Saturday afternoon. Crafts and games will continue as you learn about the Feast of Victory we share with all Christians! Campers stay in a heated cabin with bunk beds and a bathroom. Pastors and youth workers are welcome at little or no charge. For more information, contact Luther Crest at 320-846-2431, or visit [www.luthercrest.org](http://www.luthercrest.org).

**WE LOVE THE EARTH DAY, April 18, 2010.** In recognition of Earth Day, from 1:00-4:00 pm, this is an excellent opportunity to take advantage of spring and get your hands dirty at Luther Crest! Activities may include: Bird Count, Art Contest, Vendors, Know Your Farmer, Earth Movie Projected, Project Flying Wild and Project Wild Activities, Service Projects (Put up Bird Houses, Camp Sweep, Clean out Birdhouses, Buckthorn Removal), Master Gardeners, Plant a Pumpkin, Patch, Find Local Organic Food Providers. We are also hoping UMM will present on the value of prairie grasses, and to burn the camp's restored prairie. For more information, contact Luther Crest at 320-846-2431, or visit [www.luthercrest.org](http://www.luthercrest.org).